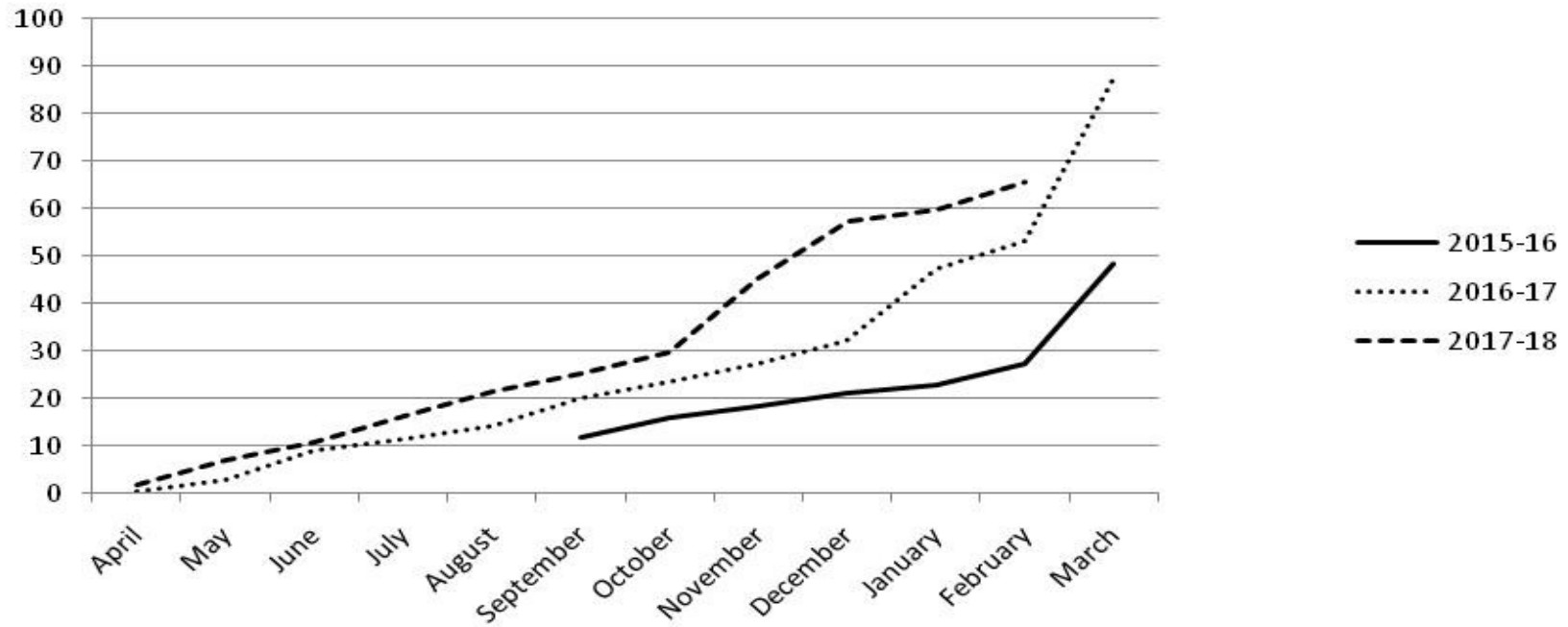


Details of Allotment and Expenditure from 01.10.15 to 28.02.18

Date	Outlay	Expenditure	% of exp. against outlay	Outlay	Expenditure	% of exp. against outlay	Outlay	Expenditure	% of exp. against outlay
	2015-16			2016-17			2017-18		
April				340.00	0.92	0.27	365.00	6.94	1.90
May				340.00	8.82	2.59	365.00	26.04	7.13
June				340.00	30.65	9.01	365.00	39.53	10.83
July				340.00	38.30	11.26	365.00	59.57	16.32
August				340.00	48.11	14.15	365.00	78.86	21.61
September	417.00	49.48	11.87	340.00	67.40	19.82	365.00	96.37	26.40
October	417.00	67.35	16.15	340.00	78.98	23.23	365.00	108.44	29.71
November	417.00	77.04	18.47	340.00	92.16	27.11	365.00	165.06	45.22
December	417.00	88.24	21.16	340.00	108.92	32.04	365.00	188.72	57.30
January	417.00	95.57	22.92	340.00	160.07	47.08	365.00	218.45	59.85
February	417.00	114.27	27.40	340.00	180.50	53.09	365.00	239.23	65.54
March	417.00	202.14	48.47	340.00	296.58	87.23			

% of monthly expenditure over outlay from 1st September 2015 to 28th February 2018



CHIEF TOWN PLANNER

